

Screen off

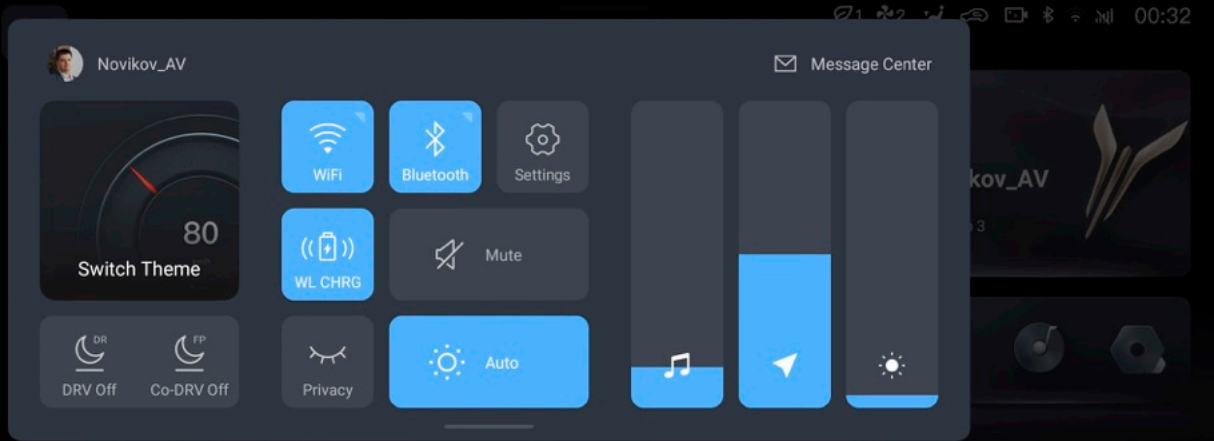


Voyah Free EVR
21MY
OTA 5.0.4.
Feb 04, 2024

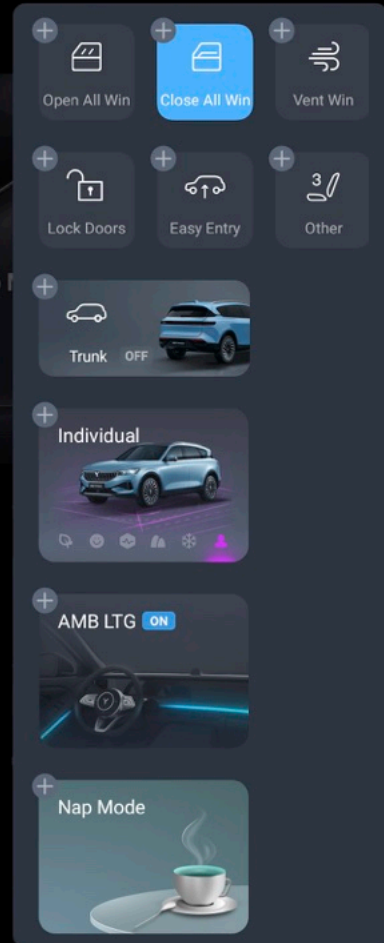
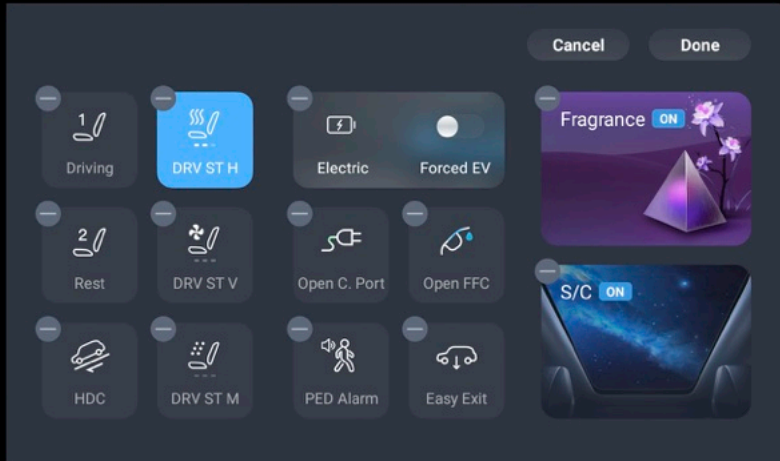
Main screen



Upper menu



Side menu customisation



Main menu

🔊1 🌿2 📶 🗣️ 📺 📶 📶 00:28



21.0°



Funn Audio



Music



Radio



Vehicle



Seat



A/C



Phone



Camera



DVR



Video



Gallery



User Center

推荐

音乐

播客

视频

新闻

🔍 不止有音乐



21.0°



每天听听

1月31日

31



场景电台

个性FM



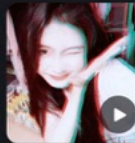
趣点歌



大家一起选路上听的歌

扫码共建歌单

热门畅听, 同



土到极致就是潮



最近播放



收藏订阅

Quick app

1 2 3 4 5 6 7 8 9 10 11 12 13 14 15 16 17 18 19 20 21 22 23 24 25 26 27 28 29 30 31 32 33 34 35 36 37 38 39 40 41 42 43 44 45 46 47 48 49 50 51 52 53 54 55 56 57 58 59 60 61 62 63 64 65 66 67 68 69 70 71 72 73 74 75 76 77 78 79 80 81 82 83 84 85 86 87 88 89 90 91 92 93 94 95 96 97 98 99 100 00:28



21.0°



Quick app

CHG & DISC

Lighting

Door & Win

Drv pref



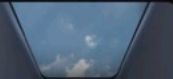
FF/CP



Lock door



Trunk



Sunroof



Scenarios



Scenarios



1 2 3 4 5 6 7 8 9 10 11 12 13:04

Nap Mode



Camping Mode



Party Mode



Baby care



New Profiles



Chg & Disc



21°



Quick app

CHG & DISC

Lighting

Door & Win

Drv pref

Charge

Target charge level(Est. Rng 105km)

60%

90%

100%

Daily driving : It is recommended to charge to 90%, so as to better protect the activity of vehicle battery.



Schedule charging

SCH Stgs

00:00 to 00:00

Discharge

BAT Dis. cut-off

10%

50%

00:28

Charging

17%

Cur Rng 20km



STOP CHARGING

Repeat ED

23 59

23 59

Start time

00 : 00

End time

00 : 00

01 01

01 01

Save

Cancel

Lighting



21.0°



Quick app

CHG & DISC

Lighting

Door & Win

Drv pref

AMB LTG

Close

Normal

Sy w Mu

Ln w Drv



Common lamp



Adaptive high beam

Welcome lighting

Close

Cheerful

Lingmou

Shine

Follow me home

After the vehicle is locked, the feature of following me home can be triggered. The position light and low beam light will turn on automatically and turn off later to illuminate your way home.

Close

15s

30s

60s

00:28



00:28

Door & Win

1 2 00:29



Quick app



CHG & DISC



Lighting

21.0°



Door & Win



Drv pref

Door lock

- Lock door
- Child lock
- Unlock when approaching
- Lock when leaving
- Remotely lock & power off vehicle
Authorize cell phone app to remotely lock & power off vehicle when it is ready



Window & Mirror

CLOSE ALL

OPEN ALL

VENT

- Auto close when locking
- Auto tilt down while reversing
- Auto fold when locking

Trunk

CL TRUNK

OP TRUNK

Tailgate opening height (Pre)

40%

100%

Sunroof

- Adjust brightness

Transparency



Drv pref

- Quick app
- CHG & DISC
- Lighting
- Door & Win
- Drv pref**

00:29

Drive mode

Eco Comf Perf Outing Snow **Indiv**

Settings

Press Settings to define your drive mode.

Power mode

Intelligent **Electric** Fuel mode Save Mode

Prioritize using power battery to provide electricity, which is more energy-saving and environmentally friendly

Forced EV

Easy entry

Auto easy entry

After opening, the suspension height will be lowered automatically when the vehicle is unlocked next time to facilitate boarding.

Easy exit

Lower

Restore

When parking, lower the suspension height to facilitate getting off.

Drive

Highway adaptive suspension

When it is turned on, the suspension height will be automatically lowered and the wind resistance will be reduced when driving on the highway.

Hill descent control

It is applicable to the scene of downhill, and the vehicle will actively brake and decelerate after being turned on.

Electronic stability program

Improve vehicle driving stability and effectively reduce the risk of side slip.

Wet mode

When enabled, adjust the intensity of braking energy recovery, to improve driving stability on slippery roads.

Medium

Suspension height:



Intelligent Electric Fuel mode **Save Mode**

Keep target electricity level

After it is turned on, the state of charge will remain at the following set value.

25%

80%

Intelligent Electric **Fuel mode** Save Mode

Gasoline-electric hybrid drive first.

Intelligent Electric Fuel mode Save Mode

Intelligent start / stop engine based on NEDC.

Drv assist

- Door & Win
- Drv pref
- Drv assist**
- SFTY maint
- Vehicle health

Drive

LKA

Warning only Lane keeping **Lane centering**

When the vehicle departs from the center of the lane, the system provides steering assistance to maintain the vehicle at the center of the lane.

Sensitivity

Low **High**

BSD & LCA
When it is identified that there is a risk of collision with the rear vehicle in the adjacent lane while driving, the system reminds of it through light and sound.

AEB
When the vehicle is close to the vehicle in front and there is a high risk of collision, the system brakes to avoid or alleviate the collision.

INTEL speed limit SYS
The information on the speed limit signs on the road is detected in real time and displayed on the cluster; in case that the vehicle exceeds the speed limit, a speed limit icon flashes and an alarm is sounded.

Alert

FCW
When the vehicle is close to the vehicle in front and there is a risk of collision, a warning alert is given on the cluster.

RCW
When the vehicle behind is at risk of colliding with the user's vehicle, the system reminds of it through light and sound.

RCTW
While reversing, if there is a vehicle crossing behind the user's vehicle and there is a risk of collision, the system reminds of it through light.

NVS w/t PED MKG/HAZ W
When the night vision system identifies that there is a risk of collision with a pedestrian, it marks the pedestrian and sounds an alarm.

Door opening warning
If there is a risk of collision when opening the driver side door, the system reminds of it through light and sound.



Sfty maint

- Door & Win
- Drv pref
- Drv assist
- SFTY maint**
- Vehicle health

00:30

Driver safety

- Driver camera**
After opening, it supports in-car photography, face recognition, driver status monitoring and driver gesture recognition.
- Fatigue and distraction monitoring**
Monitor driver fatigue and distracted driving behavior during driving, and provide reminders.
- Driver gesture recognition** ⓘ
Complete mute, photo taking, call operation, etc. through simple gestures.



Keep the gesture for 2 seconds

Media Mute Put your index finger on your lip and shake.	Meimei Selfie Make a V sign to the camera.	Reject call Point your palm at the camera.	Answer Call Make an OK sign beside your mouth.

Rear row crew safety

- Rear camera**
After opening, you can use the functions of taking photos in the car, caring for children in the rear row, reminding children of unlocked locks, and monitoring passengers belongings.
- Reminding Children of unlocked locks**
If the child is on the train and the child lock is not locked, a warning will be sent.

Reminder outside the vehicle

Vehicle anti-theft alarm

- Light only
- Light+horn**

Lock the car remind

- Light only**
- Light+horn

- Low SPD PED WRNG SND**
When the vehicle is running at low speed, it will emit a simulated sound to warn the traffic and pedestrians.

Maintain

Max fuel consumption test

It is used for annual inspection and line crossing inspection. When it is turned on, the ranger will be forced to start.

- Close**
- Low idle
- High idle

- Tow mode**
When the fault needs to be rescued, maintain the N gear.

- Air suspension service mode**
Suspension height adjustment will be disabled when air suspension is serviced.

Vehicle health

1 2 13:06



Drv pref

车检报告 报告详情 保养信息



Drv assist



SFTY maint

21.0°

Vehicle health



Settings >



更新时间:
2024-02-04 18:06:34
车辆有异常,请联系岚图交付
服务中心!



刷新数据

车身

智能电子电器

信息娱乐

辅助驾驶

Report details

1 2 13:06



21°



Drv pref

车检报告 报告详情 保养信息

Drv assist

健康评估

SFTY maint

Vehicle health

Settings >

健康评估项	描述	评估结果	健康扣分
车身	隐藏式门把手控制器2	异常	-40
智能电子电器		正常	不扣分
信息娱乐		正常	不扣分
辅助驾驶		正常	不扣分
底盘		正常	不扣分
动力		正常	不扣分
保养	是否保养超里程	否	不扣分
保养	是否保养超时	是	-2

健康驾驶记录

驾驶行为

行为记录(本月)

低于20%电量运行

0

急加速

0

急刹车

0



21°C



Drv pref

车检报告 报告详情 保养信息

Drv assist

时间及里程先到者为准

SFTY maint

Vehicle health

Settings >



磨合保养

剩余增程器里程：4971公里

下次保养时间：已超时



空调滤芯

剩余行驶里程：19969公里

下次保养时间：2024-06-11



空气滤芯

剩余增程器里程：19971公里

下次保养时间：2024-06-11



机油机滤

剩余增程器里程：9971公里

下次保养时间：2024-06-11



碳罐空气过滤器

剩余增程器里程：39971公里

下次保养时间：2025-06-11



制动液

剩余行驶里程：39969公里

下次保养时间：2026-06-11



冷却液

剩余行驶里程：79969公里

下次保养时间：2027-06-11



齿轮润滑油

剩余行驶里程：79969公里

下次保养时间：2027-06-11



附件皮带

剩余增程器里程：99971公里

下次保养时间：2029-06-11



火花塞

剩余增程器里程：29971公里

Network



21°



Network

Display

Voice

Sound

Reminder

1 2 3 4 5 6 7 8 9 10 11 12 13:07

BT

device name: Angel岚图FREE [Edit >](#)

Rescan

iPhone XII Pro Max Connected



Wi-Fi

Rescan

N Connected



DIRECT-03-BMW77819 Unconnected



AP Hotspot

device name: Angel岚图FREE [Edit >](#)

Mobile data network

Enable 5G

When enabled, 5G will be automatically used in the 5G mobile network environment.

- Home
- Navigation
- 21.0°
- Mail
- App Grid

- Network
- Display**
- Voice
- Sound
- Reminder

Cluster

Cluster Card Customization(Not displayed in Navigation / Full-Screen Navigation / Lowered Multimedia Display modes)

ENE CON	Sin. Start	Trip	Ins E CON	ENE Flow
VEH State	NAV	FS NAV	MMD	

Remaining range display

WLTC	Cond. range <input checked="" type="checkbox"/>
------	---

The conditioned range is more in line with the actual use, so the prediction is more accurate.

Electricity percentage

Theme

Classic	Minimalist <input checked="" type="checkbox"/>	Speedy Dash
---------	--	-------------

Lock screen display

Long press "⏻" between the two screens or use the voice command Standby to activate.

Night	Clock <input checked="" type="checkbox"/>	City	Nature
-------	---	------	--------

Brightness

Day Night **Auto**

Cluster 5

Driver 5

Co-Drv. 5

Sync adjustment

Language

Chinese (Simplified) **English**

Voice



21°



Network

Voice switch When disabled, you'll unable to wake up voice assistant through HI VOYAH, or Hey VOYAH.

Display

Smart scenario Create your own voice password and action series, faster and more convenient.

My scene >

Voice

Sound

TTS voice

TTS Voice

Mandarin

Dialect

My voice

Soft female voice

Mature male voice

Voice prompts

Standard

Simple

The UI is more concise without prompts.

Reminder

All-scenario SR

Four-zone speech recognition
When disabled, anyone is able to wake up the voice assistant and talk to it.

Continuous conversation
When disabled, support only 1 command for each wakeup.



Sound

- Home
- Navigation
- 21°C
- Car
- App Store

- Network
- Display
- Voice
- Sound**
- Reminder

Volume

Media

Navi

Voice

Call

Sys

System key tone

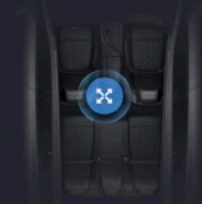
Reduce media volume during navigation broadcast
If too high during navigation broadcast, media volume will be automatically lowered.

Speed compensated volume
The volume increases or decreases as the vehicle goes faster or slower. You no longer have to adjust the volume frequently, thus able to focus on driving.

DYNAUDIO Confidence

Fader balance

When the elderly or kids are resting in the rear seats, you can move the audio source position to the front to enjoy the music yourself, without disturbing the passengers in the back.



EQ equalizer

Super bass

Bass

Mid

Treble

Volume enhancement

Focus

Sound characteristics

Reminder

1 2 13:09



21.0°



Network

Display

Voice

Sound

Reminder

Warm Care

- Care during driving
Weather-based care during driving
- Moments of companionship
Companionship & greetings on special days

Featured Service

- Recommendation during driving
Weather-based vehicle control & highway insurance recommendation

Device

1 2 3 4 5 6 7 8 9 10 11 12 13 14 15 16 17 18 19 20 21 22 23 24 25 26 27 28 29 30 31 32 33 34 35 36 37 38 39 40 41 42 43 44 45 46 47 48 49 50 51 52 53 54 55 56 57 58 59 60 61 62 63 64 65 66 67 68 69 70 71 72 73 74 75 76 77 78 79 80 81 82 83 84 85 86 87 88 89 90 91 92 93 94 95 96 97 98 99 100 00:31



21.0°



Voice

Sound

Reminder

Device

Privacy

Steering Wheel

Custom Steering Wheel Controls

AU SC SW

Mute

Back



Wireless Charging For Phone



Wireless Charging For Mobile Devices

Privacy

13:09



21°



Sound

Reminder

Device

Privacy

System

Privacy protection

Always remind me when system starts

Bluetooth call privacy

The incoming call number is encrypted, and will not be displayed in contact list and call history

Schedule privacy

Hide details when reminding of a schedule

Whereabouts privacy

Navigation footprints, favorites and search history disabled, and group location sharing not allowed on IVI

Disable interior camera

In-vehicle driving safety monitoring disabled; and camera and video recording features disabled

Disable interior MIC

Intelligent voice assistant disabled, group driving disabled, and voice input method unable to recognize speech



Reminder

Device

Privacy

System

Vehicle >

Upgrade

System upgrade

Check / Update Your software is already up to date [View details](#)

Voice upgrade

Version: 4018

Check / Update Your software is already up to date

System version

Software version

BN.01.20240126201636.rc1.4.user.f0506h

Hardware version

V3.0

MCU version

H97AP8M202401261

BT MAC

Cluster software version

H97ASA8155-DAILY-20240126212833-USR

Navigation software version

V2.1.1.202311181739.license.h97

Voice resource version

h97aota5_20230904171971

IMSI

PDSN

T-Box hardware version

H97A3630812BE-2.3.5

T-Box VIN

Factory reset

Factory reset

Privacy Agreement and Service Agreement

Check

A/C

1 2 00:31

A/C

Seat

Fragrance



Settings

Venting&Cooling

Rapid cooling and ventilation before entering the car, when the temperature is high in summer

A/C mode

Soft

Normal

Strong

21.5

21.0 °C

20.5

21.0

21.5

21.0 °C

20.5

Front Sync



A/C



AUTO



Seat

A/C **Seat** Fragrance

Driver



Co-Driver



Welcome & courtesy



Memory & restore



21.0°



Fragrance

1 2 3 4 5 6 7 8 9 10 11 12 13 14 15 16 17 18 19 20 21 22 23 24 25 26 27 28 29 30 31 32 33 34 35 36 37 38 39 40 41 42 43 44 45 46 47 48 49 50 51 52 53 54 55 56 57 58 59 60 61 62 63 64 65 66 67 68 69 70 71 72 73 74 75 76 77 78 79 80 81 82 83 84 85 86 87 88 89 90 91 92 93 94 95 96 97 98 99 100 00:31

A/C

Seat

Fragrance

Concn

Low

Medium

High

Time

30min

60min

Unlimited

Fresh bamboo

On



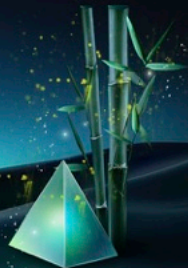
Peony scarlet

off



Watery mist

off



21.0°





Copilot. Custom app



Moscow

Mo 5 Today Tu 6 -2° We 7 -4° Th 8 -10° Fr 9 -10° Sa 10 -10° Su 11 -6° Mo 12 1° Tu 13 5° We 14 -4° Th 15 2° Fr 16 -9° Sa 17 -10° Su 18 -13° Mo 19 Tu 20 We 21 Th 22 Fr 23 Sa 24

10:51

10 am 11 am 12:00 1:00 2:00 3:00 4:00 5:00 6:00 7:00 8:00 9:00 10:00 11:00 12 am

-3°

Partly Cloudy
0 km/h ~ NW
Feels like -3°
Pressure 988 hPa
Water 0°

PIZZA PASTA

FINE FOODS

MOTEL FLORA

Remove ads

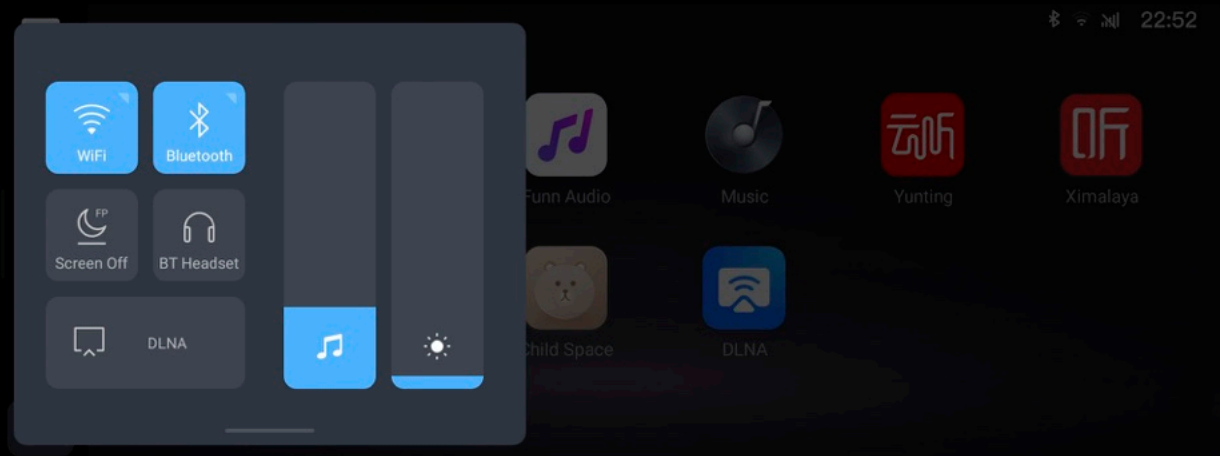
Copilot. Main menu



Copilot. Side menu



Copilot. Upper menu



Copilot. DLNA



22:52

DLNA

- 1 Please make sure that the IVI and the phone are in the same LAN. It is suggested that you connect the IVI to the mobile Wi-Fi hotspot on the phone.
- 2 When playing a video on the phone after connecting, activate the DLNA function and select "Angel 岚图FREE"



Cluster

